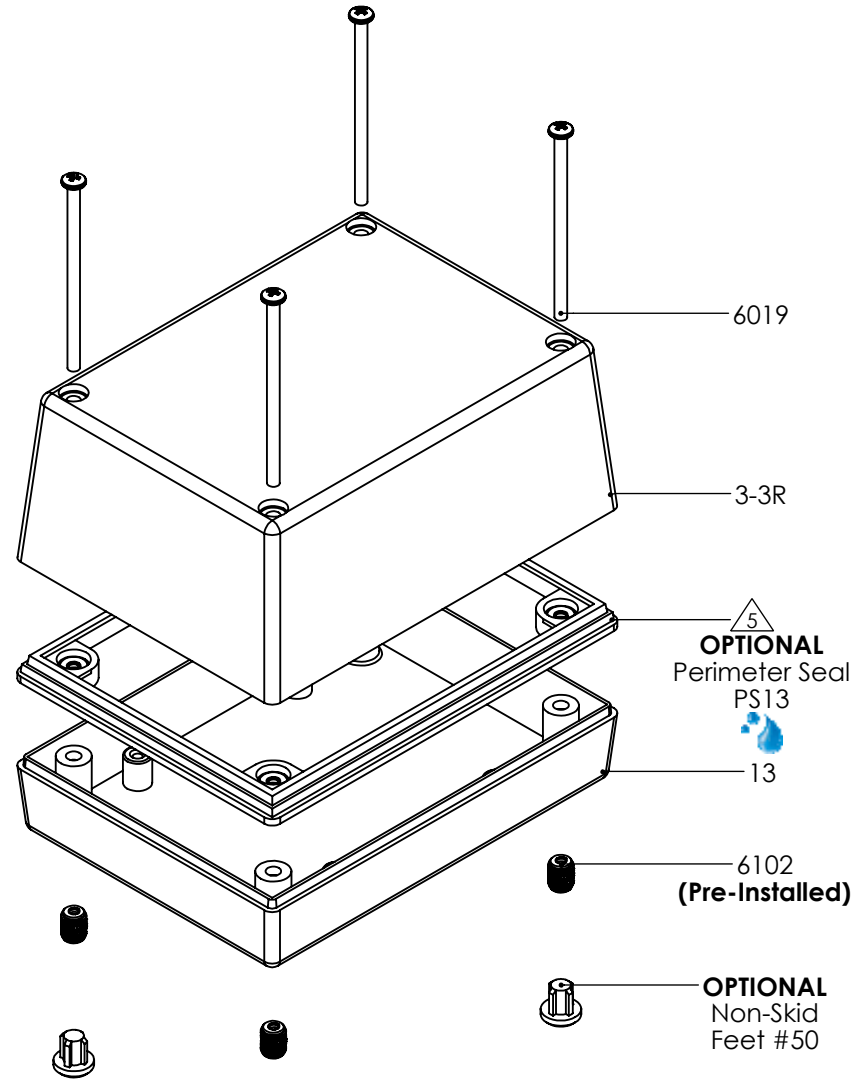
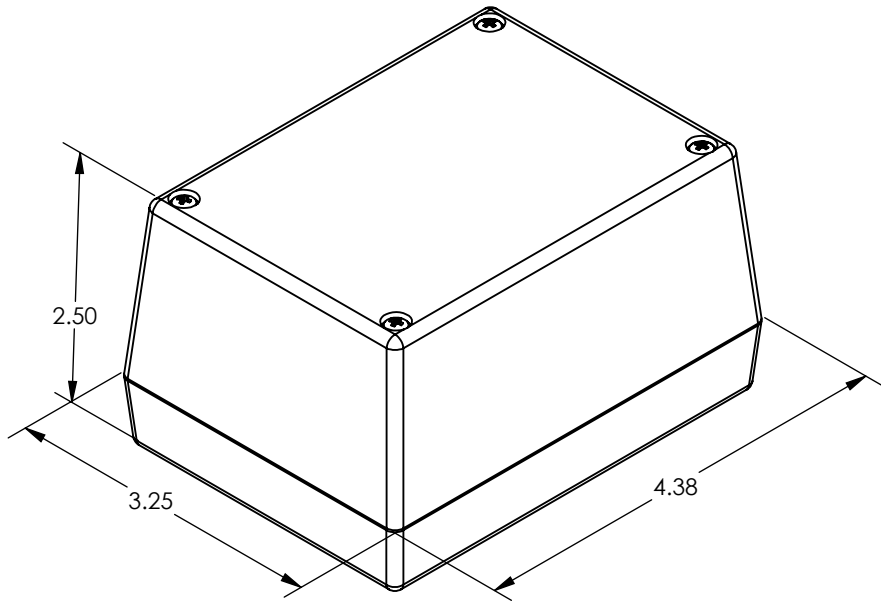


# SERPAC 133R

ELECTRONIC ENCLOSURES

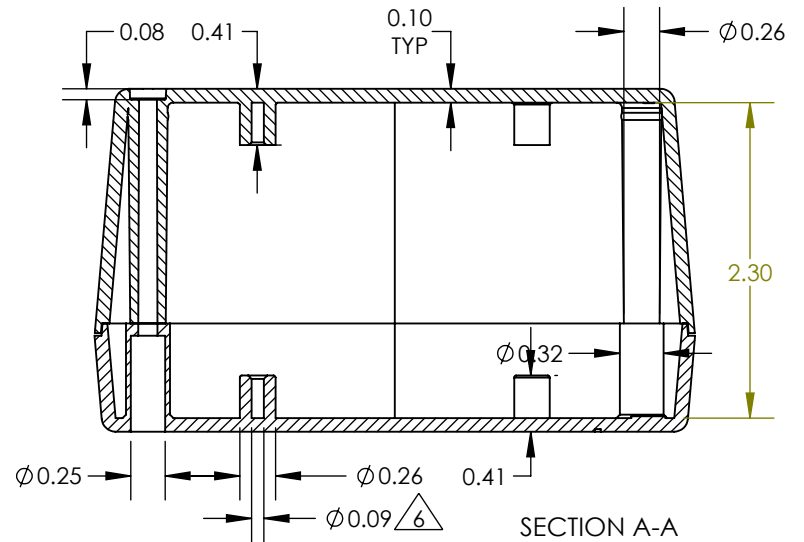
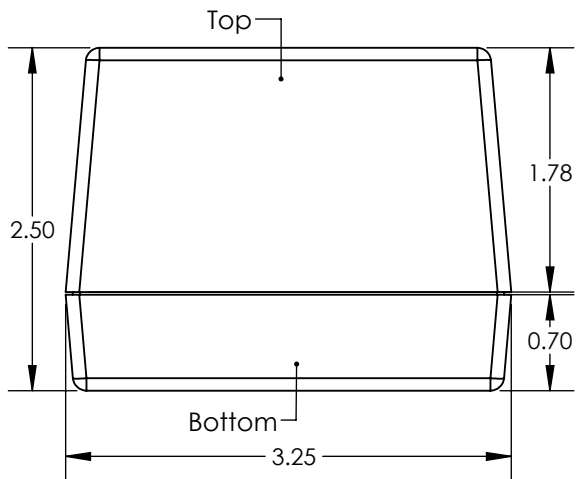
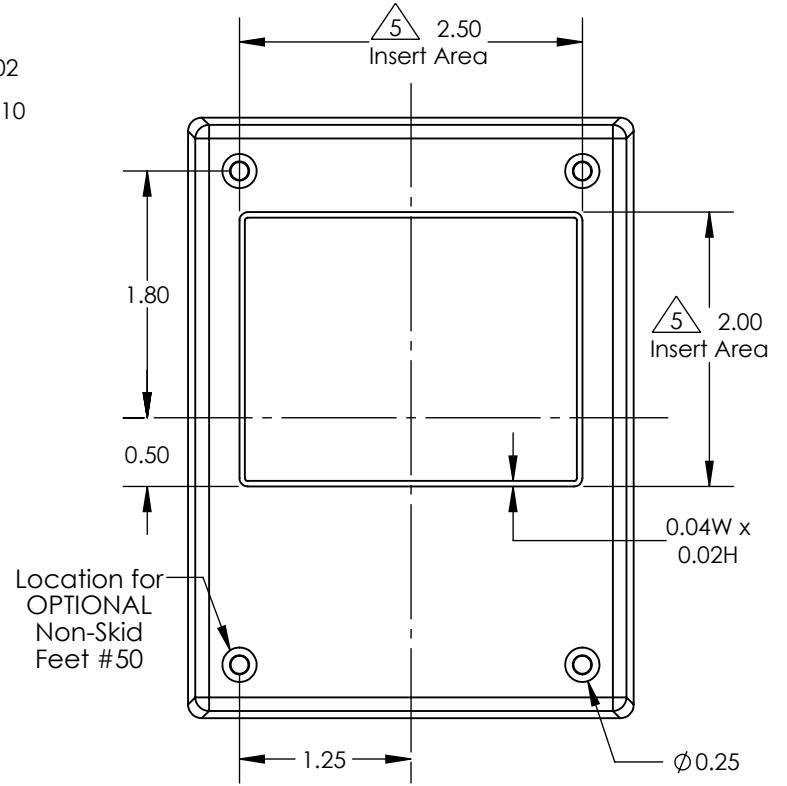
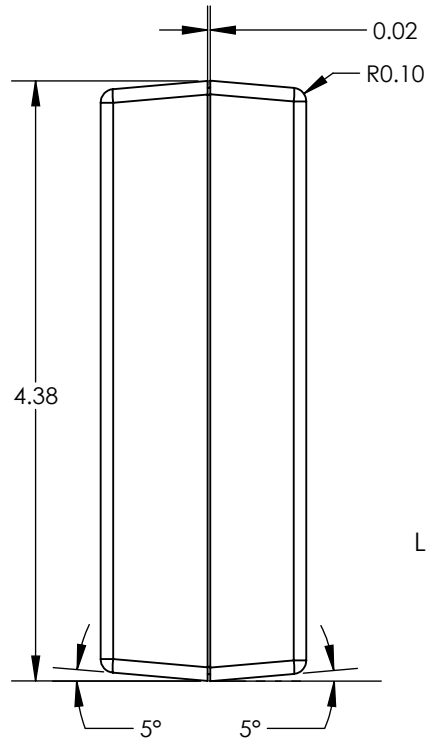
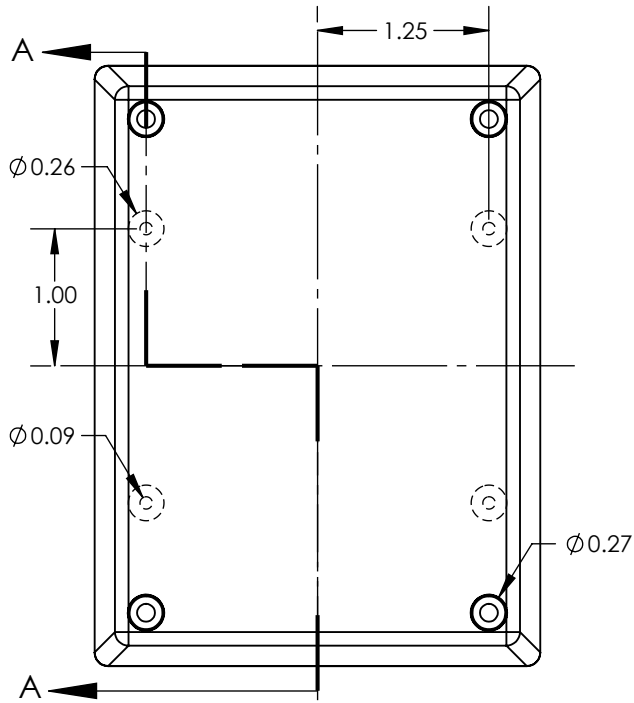


| PART NO. | DESCRIPTION (Included)    | ACCESSORIES (Optional) |                           |
|----------|---------------------------|------------------------|---------------------------|
| 3-3R     | Top                       | PART NO.               | DESCRIPTION               |
| 13       | Bottom                    | 50                     | Non-skid Feet             |
| 6019     | 4-40 x 2" Screw (4)       | PS13                   | Waterproof Perimeter Seal |
| 6102     | 4-40 Threaded Inserts (4) | 1030                   | Pocket Clip               |
|          |                           | 1040                   | 2AA Battery Holder        |
|          |                           | 55                     | Key Holder                |
|          |                           | 60                     | Standoff Hole             |
|          |                           | 61                     | Standoff Post             |

Notes: Enclosure weight .26 lb / 120 g  
 1) Enclosure meets or exceeds IP40 and NEMA 1  
 2) Circuit Board drawings see sheet 3.  
 3) All components are RoHS Compliant.  
 4) Material: Top and Bottom ABS.  
 5) When used with PS13 the enclosure meets or exceeds IP 67 and NEMA 4X, 12 and 13 MIL-STD-810G 506.5 (.02 lb / 10g)

# SERPAC 133R

ELECTRONIC ENCLOSURES



- Notes: Enclosure weight .26 lb / 120 g
- 1) Enclosure meets or exceeds IP40 and NEMA 1
  - 2) Circuit Board drawings see sheet 3.
  - 3) All components are RoHS Compliant.
  - 4) Material: Top and Bottom ABS.
  - 5) Customizable molding areas.  $\triangle 5$
  - 6) PCB Bosses accept #4 self tapping screw.  $\triangle 6$
  - 7) When used with PS13 the enclosure meets or exceeds IP 67 and NEMA 4X, 12 and 13 MIL-STD-810G 506.5 (.02 lb / 10g)

# SERPAC 133R CIRCUIT BOARD

ELECTRONIC ENCLOSURES

## Top & Bottom Option

