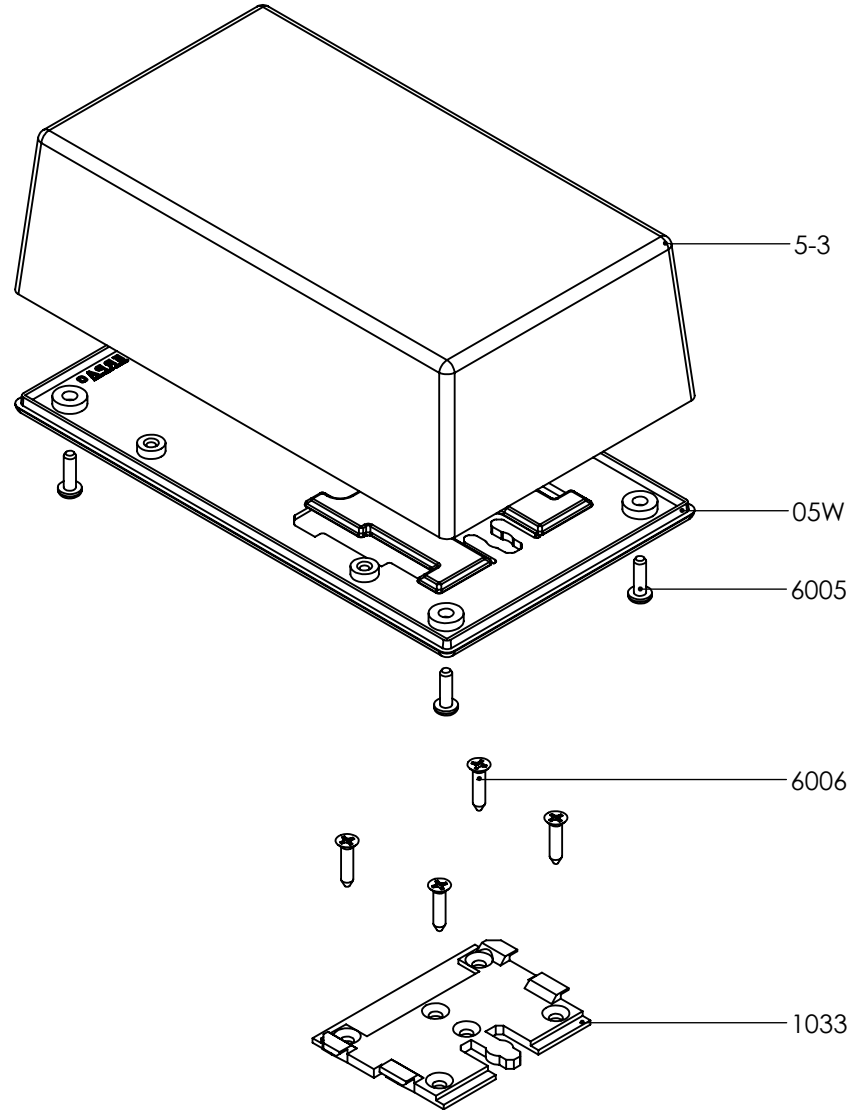
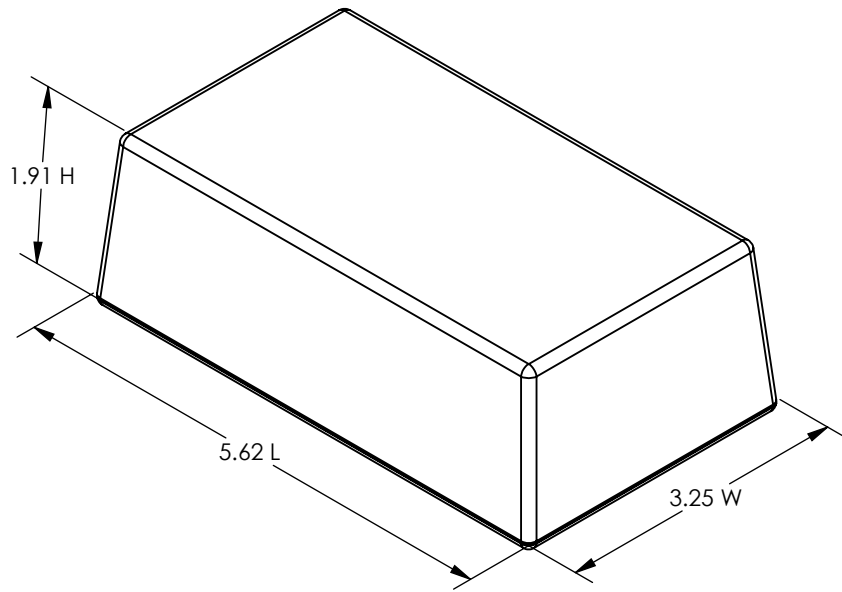


# SERPAC 053W

ELECTRONIC ENCLOSURES

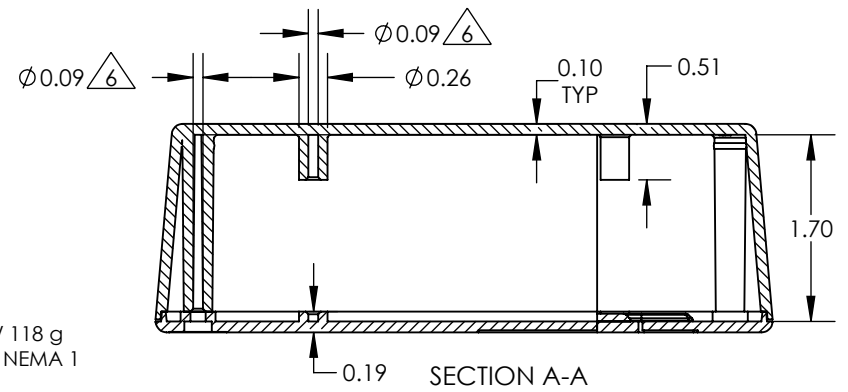
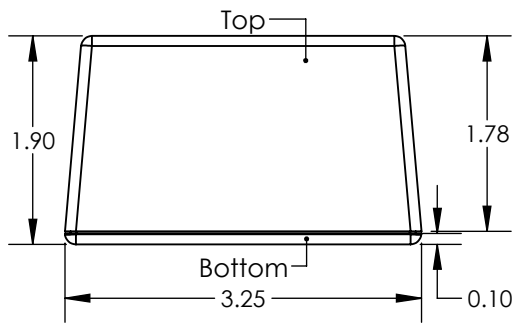
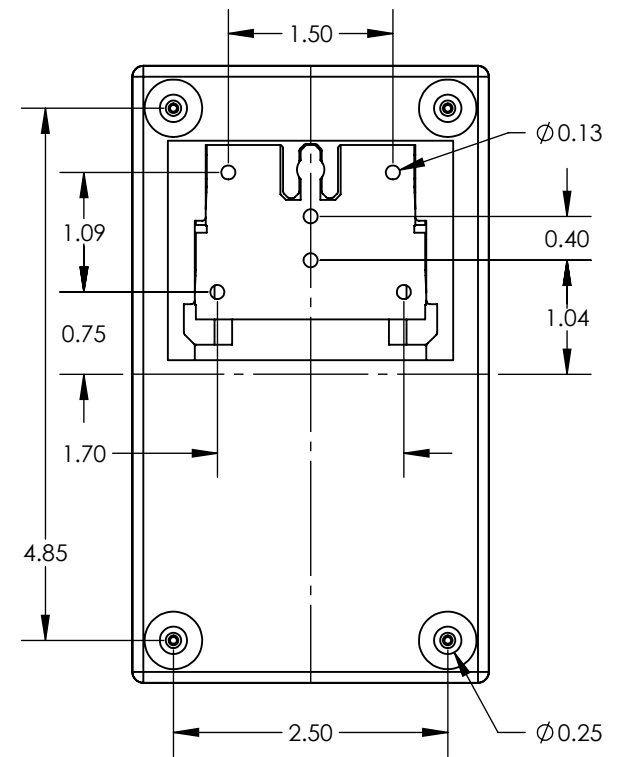
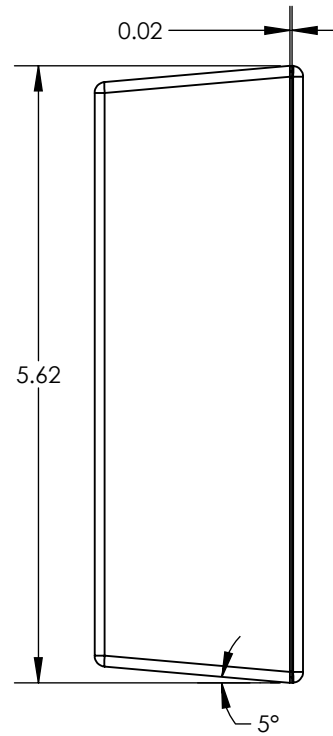
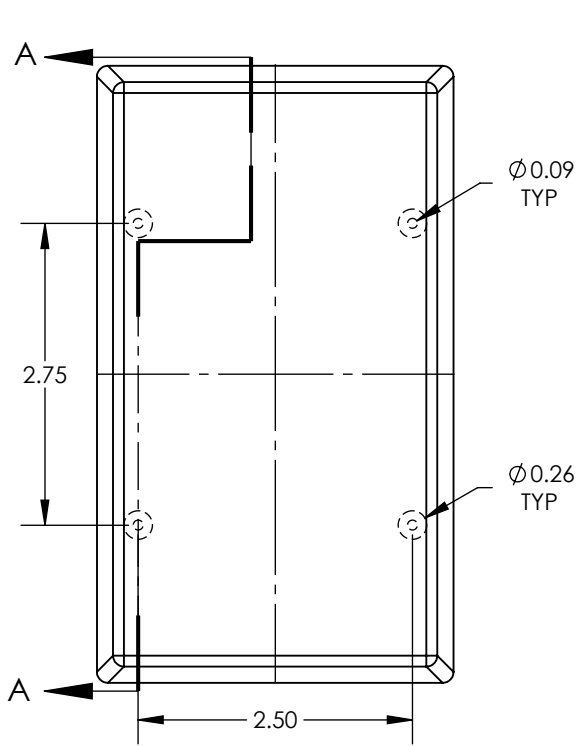


PART NO.	DESCRIPTION (Included)	ACCESSORIES (Optional)	
5-3	Top	PART NO.	DESCRIPTION
05W	Bottom	1040	2AA Battery Holder
1033	Wall-Mount Plate	60	Standoff Hole
6005	#4X3/8" Self-Tapping Screw (4)	61	Standoff Post
6006	#4X1/2" Self-Tapping Screw (4)		

Notes: Enclosure weight .26 lb / 118 g  
 1) Enclosure meets or exceeds IP40 and NEMA 1  
 2) Circuit Board drawings see sheet 3.  
 3) All components are RoHS Compliant.  
 4) Material: Top and Bottom ABS.

# SERPAC 053W

ELECTRONIC ENCLOSURES



- Notes:
- 1) Enclosure weight .26 lb / 118 g
  - 2) Circuit Board drawings see sheet 3.
  - 3) All components are RoHS Compliant.
  - 4) Material: Top and Bottom ABS.
  - 5) Customizable molding areas.  $\triangle 5$
  - 6) PCB Bosses accept #4 self tapping screw.  $\triangle 6$

# SERPAC 053W CIRCUIT BOARD

ELECTRONIC ENCLOSURES

## Top & Bottom Option

