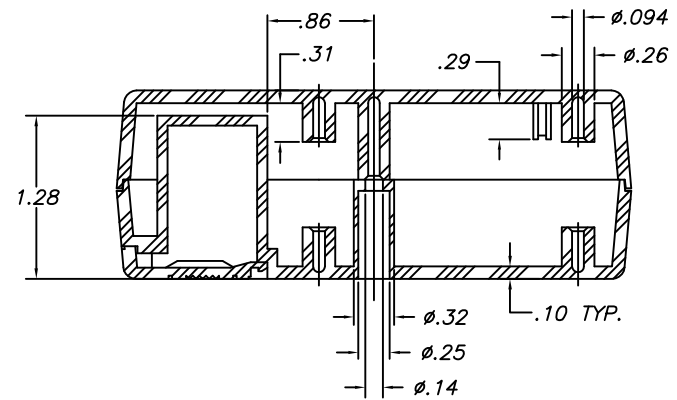
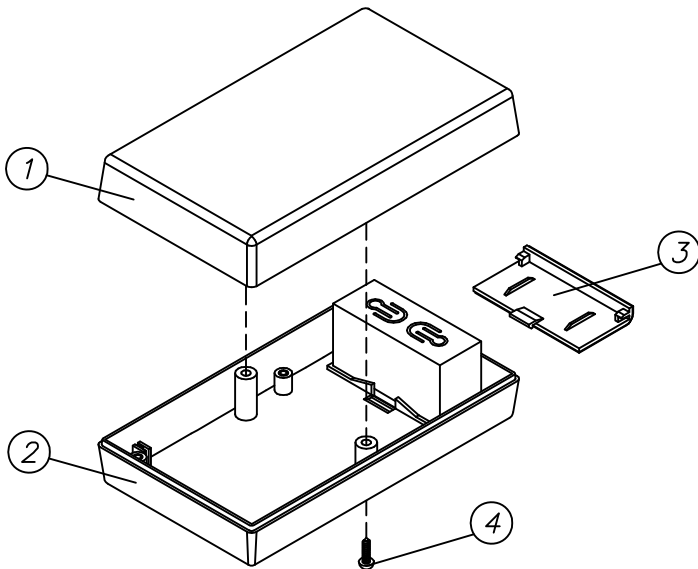
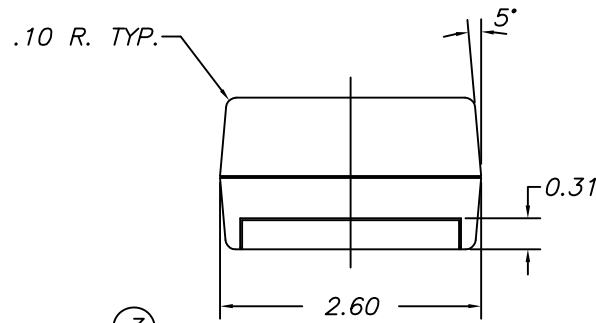
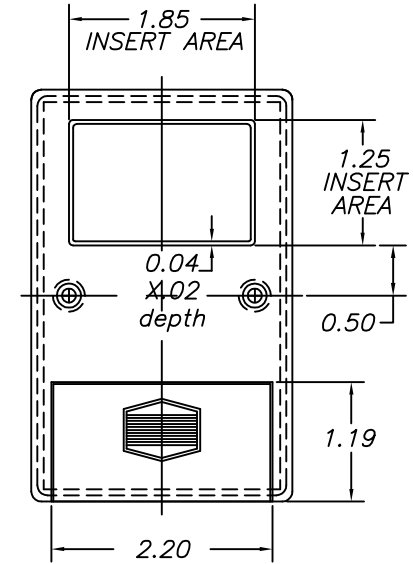
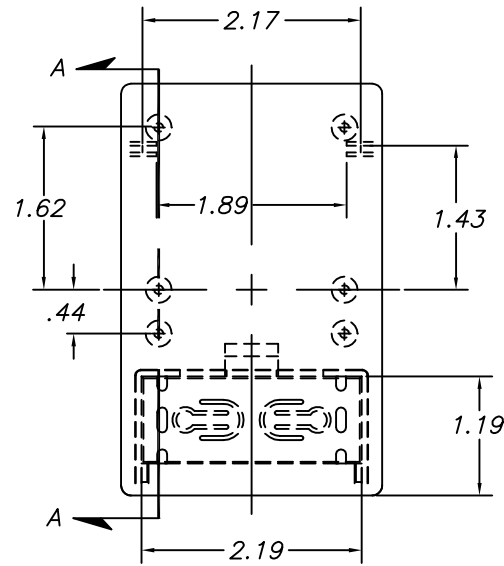
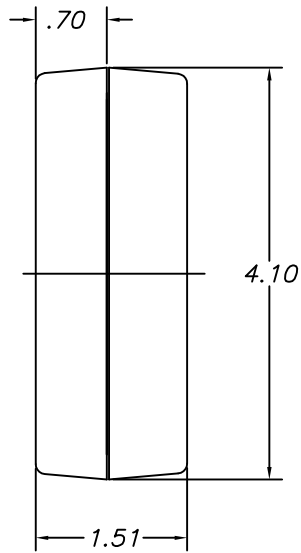


SERPAC 221

Electronics Enclosures

NOTES:

1. WHEN MACHINE OR I PLATES MODIFICATIONS ARE REQUIRED, USE THE CENTER OF THE ENCLOSURE TO DIMENSION.



SECTION A-A

2/24/09

ALL DIMENSIONS ± .010

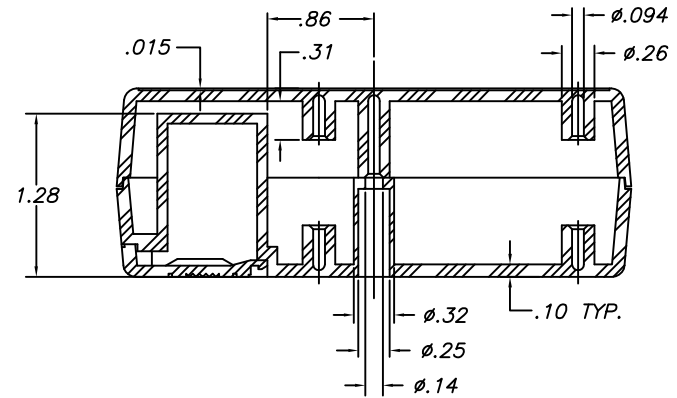
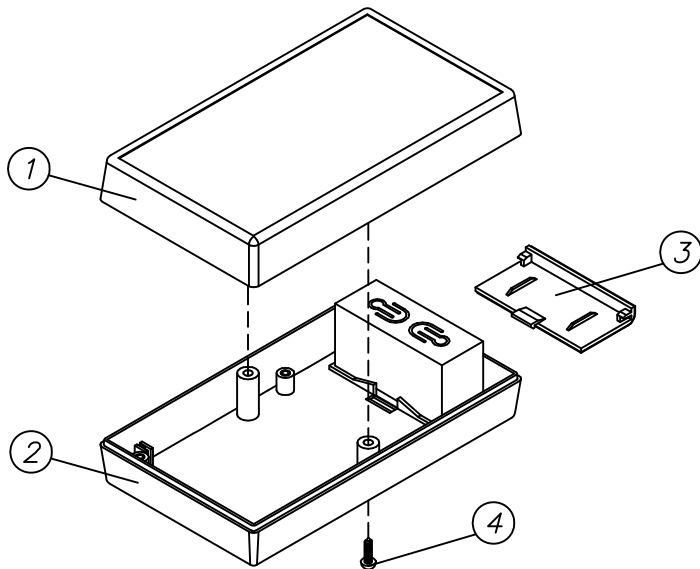
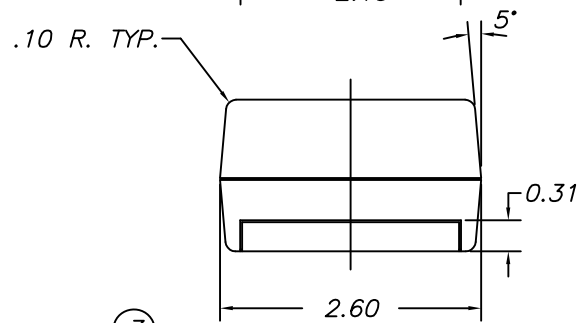
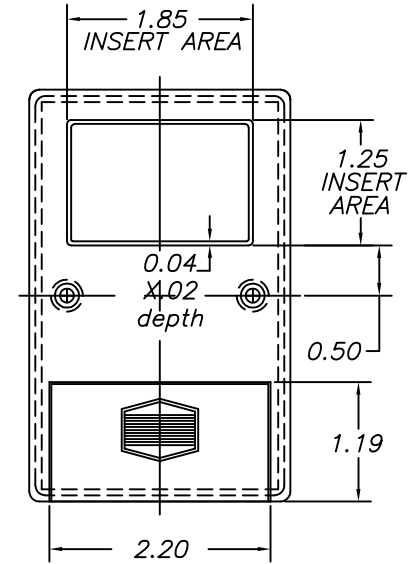
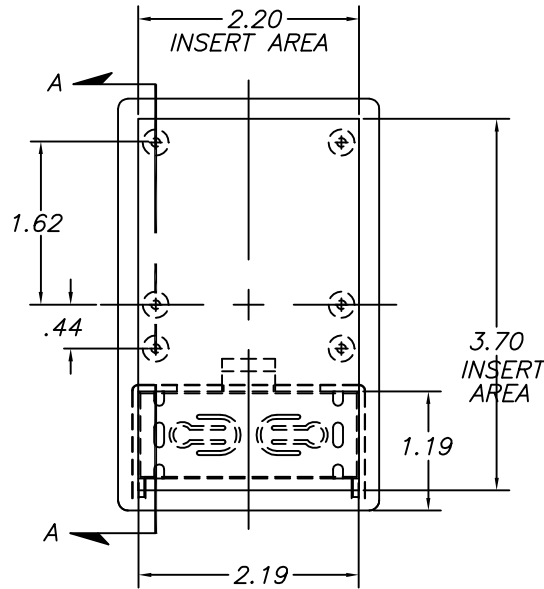
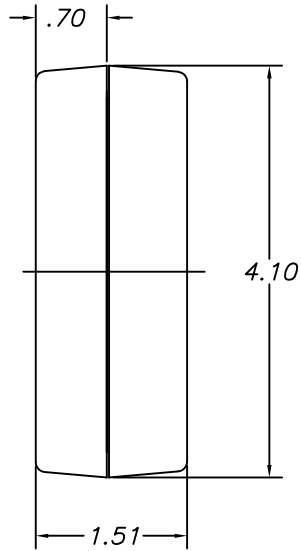
ITEM	PART NO.	DESCRIPTION	ACCESSORIES	
			PART NO.	DESCRIPTION
1	2-1	PLASTIC TOP		
2	22	PLASTIC BOTTOM		
3	1025	PLASTIC BATTERY COVER	51	FEET
4	6005	SCREWS (2)	319	PROTOTYPE GRID BOARD (HORIZ.)
			419	PROTOTYPE CLAD BOARD (HORIZ.)

SERPAC 221-I

Electronics Enclosures

NOTES:

1. WHEN MACHINE OR I PLATES MODIFICATIONS ARE REQUIRED, USE THE CENTER OF THE ENCLOSURE TO DIMENSION.



SECTION A-A

2/24/09

ALL DIMENSIONS ± .010

ITEM	PART NO.	DESCRIPTION	ACCESSORIES	
			PART NO.	DESCRIPTION
1	211	PLASTIC TOP	51	FEET
2	22	PLASTIC BOTTOM	319	PROTOTYPE GRID BOARD (HORIZ.)
3	1025	PLASTIC BATTERY COVER	419	PROTOTYPE CLAD BOARD (HORIZ.)
4	6005	SCREWS (2)		